

# 2024 May Day Regatta

Saturday 4<sup>th</sup> and Sunday 5<sup>th</sup> May.

Incorporating the 2024 Queensland Arrow Championships

## SAILING INSTRUCTIONS



## 1. RULES

The regatta will be governed by *the current Racing Rules of Sailing (RRS)*, except as any of these are changed by these Sailing Instructions.

## 2. ENTRIES

Eligible boats may be entered by completing registration with the organizing authority The Keppel Bay Sailing Club Inc.

## 3. NOTICES TO COMPETITORS

Notices to competitors will be posted on the official Noticeboard(s) located at near the regatta office on the beach.

## 4. CHANGES IN SAILING INSTRUCTIONS

Any change to the Sailing Instructions will be posted before 9:00am on the day it will take effect, except that any change to the Schedule of Races will be posted by 6:00pm on the day before it will take effect.

## 5. SIGNALS MADE ASHORE

5.1 Signals made ashore will be displayed at the Official Flag Staff located beside the regatta on the beach at Farnborough beach, Yeppoon.

5.2 Flag AP with two sound signals (one sound signal when lowered) means 'the race is postponed. The warning signal will be made not less than 30 minutes after AP is lowered.'

## 6 SCHEDULE OF RACES

Races are scheduled as follows:

Day/Date	Activity	Time of Warning Signal & not before
Saturday – 4 <sup>th</sup> May 2024	<b>Briefing</b>	11:00am
	Heat 1	12.30pm
	Heat 2	After Heat 1
	Heat 3	After Heat 2
Sunday – 5 <sup>th</sup> May 2024	Heat 4	9:25am
	Heat 5	After Heat 4
	<b>Marathon Briefing</b>	1:00pm
	Marathon	1.30pm (DASH FOR CASH)
	<b>Presentation at Krackers</b>	4:30pm

## 7 CLASS FLAGS

Class	Flag
Catamarans	Numeral Pendant 2
Monohulls	Numeral Pendant 1
Intermediate Monohulls & Catamarans	Numeral Pendant 3
Juniors	Green flag with Sabot/Opti insignia

## 8. RACING AREA

There will be two racing areas.

Race area A will be for the Juniors

Race area B will be for all the senior fleets.

The Race areas will be as shown in Illustration B, attached.

## 9. THE COURSE

The diagrams in Attachment A show the courses.

For Course Area B a course board display the course type (Triangular or Windward Leeward) will be displayed on the start boat at or with the Warning signal for first fleet for each race.

## 10. MARKS

The Marks are described in Attachment A.

## 11. THE START

- 11.1 Races will be started using rule 26, with the warning signal given 5 minutes before the starting signal.
- 11.2 The order of the starts for the first heat of each day on Course area B (Senior Fleets) is:
- 1<sup>st</sup> Start** : Monohull and Intermediate divisions
- 2<sup>nd</sup> Start** : Catamarans
- 11.3 The starting order for subsequent heats each day may vary.
- 11.4 The starting line will be between a staff displaying an orange flag or shape on the race committee boat at the starboard end and the port-end starting mark.
- 11.5 Boats whose preparatory signal has not been made, shall keep clear of the starting area and of all boats whose preparatory signal has been made.
- 11.6 A boat shall not start later than 5 minutes after her starting signal.

## 12. MARK BOATS

Mark boats may be stationed beyond each mark. Mark boat will display a Club Burgee. Failure of a mark boat to be on station or to display her signal will not be grounds for redress. This changes rule 62.1(a).

## 13. CHANGE OF COURSE AFTER THE START

A change of course after the start will be signaled before the leading boat has begun the leg, although the new mark may not then be in position. The new mark will be an orange mark. Any mark to be rounded after rounding the new mark may be relocated to maintain the original course configuration. When in a subsequent change of course a new mark is replaced, it will be replaced with an original mark.

## 14. THE FINISH

14.1 The finishing line will be between a staff displaying an orange flag or shape on the race committee boat and a yellow pencil Buoy.

## 15. TIME LIMIT

15.1 The time limit will be 60 minutes for all classes. Boats failing to finish within 20 minutes after the first boat of their division finishes or within the time limit, whichever is later, will be scored Did Not Finish. This changes rule 35.

15.2 The time limit for the marathon will be 2 hours for all classes. Boats failing to finish within 30 minutes after the first boat of their division finishes or within the time limit, whichever is later, will be scored Did Not Finish. This changes rule 35.

## 16. PROTESTS

16.1 Protests shall be written on forms available at the race office and delivered there within 1 hour after the time of the last boat's finish of :

- Heat 3 (for protests relating to Heats 1 ,2 and 3);
- Heat 5 ( for protests relating to Heats 4 and 5);
- The marathon (for protests relating to the marathon).

16.2 Protests will be heard in approximately the order of receipt as soon as possible.

16.3 Protest Notices will be posted within 30 minutes of the protest time limit to inform competitors where and when there is a hearing, in which they are party to a hearing or named as witnesses.

16.4 Rule 66 is changed by adding this sentence: 'On the last day of racing, a *party* to the hearing may ask for a reopening no later than one hour after being informed of the decision.'

## **17. SCORING**

The Low Point scoring system, Appendix A, will apply. 5 races are scheduled, of which 3 races shall be completed to constitute a series.

Each boat's series score will be the total of her race scores. She may discard her worst score if 4 or more races are completed. The lowest series score wins.

The marathon is not included in the calculation for overall series placings.

The results for all races will be calculated using the AS Yardstick handicap system

## **18. SUPPORT BOATS**

Team leaders, coaches and other support personnel shall not be in the racing area from the time of the preparatory signal for the first class to start until all boats have finished or the race committee signals a postponement, general recall or abandonment. The penalty for failing to comply with this requirement will be disqualification all boats associated with the support personnel who do so.

## **19. PRIZES**

Prizes will be awarded to the boats finishing 1st, 2nd and 3rd in each division for the regatta. Cash prizes will be awarded to the boats finishing 1st in each division for the Marathon. Other prizes may be awarded at the discretion of the Race Committee.

# ATTACHMENT A

## Courses for Course area A (Junior Course)

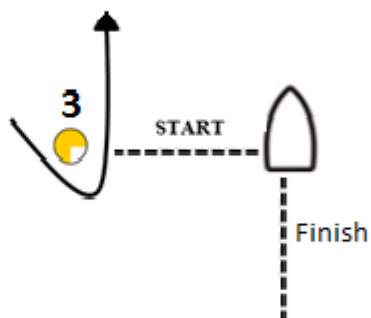
### Course A Triangle Course:

Juniors: Start-1-2-3-1-3-1-2-3-Finish

Green Fleet: Start-1-2-3-1-3-Finish

The finish line will be between the finish mark and the blue flag on the committee vessel.

Marks 1, 2 and 3 will be yellow pencil buoys, the finish mark will be a yellow pencil mark.



## Courses for Course area B ( Senior Fleets)

### Course A Triangle Course:

Catamarans: Start-1-2-3-1-3-1-2-3-Finish

Monohulls: Start-1-2-3-1-3-1-2-3-Finish

Intermediates: Start-1-2-3-1-3-Finish

The start /finish gate shall only be sailed through when starting or finishing.

Marks 1, 2 and 3 will be Red Inflatable buoys, the port end of the start/finish line will be a yellow pencil buoy.



## Course B WINDWARD / LEEWARD COURSES

Marks 1 will be left to port. Marks 2S and 2P is a gate.

**Course ID Course**

**All Senior Divisions.**

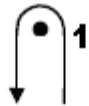
**Catamarans: Start-1- 2S/2P- 1- 2S/2P- 1 – finish**

**Monohulls: Start-1- 2S/2P- 1- 2S/2P- 1 – finish**

**Intermediates: Start-1- 2S/2P- 1- finish**

Marks 1, 2S and 2P are Red Inflatable Buoys.

The port end of the start/Finish line will be a yellow pencil buoy.





## ILLUSTRATION B – Racing Area

